

ZygoLOGY ProGrip Rivet Nuts

0262 Stainless Steel Large Flange Closed End Range

Issue #1-2017

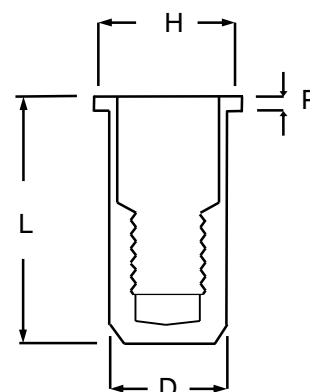
The most cost effective method of installing a full depth thread in thin gauge materials, ProGrip Rivet Nuts come in a variety of forms. Ideal for use in drilled or punched holes, ProGrip Rivet Nuts are installed from one side making them especially suitable for tube, box sections or tight corners. A comprehensive range of inserts is available in a large range of metric thread sizes to suit most applications.

The large flange head increases push out and torque to turn performance. To increase torque to turn values, especially in softer materials, splined inserts may be used. Closed end inserts can be used to ensure that incorrect bolts cannot damage internal components, and improves resistance to ingress from fluids.



0262 Series Stainless Steel Large Flange Closed End Range

| Thread Size | Part Number | Grip Range | Hole Size -0.0 +0.1 | D | L | H | P |
|-------------|-------------|------------|------------------------|-------|------|------|-----|
| M4 X 0.7 | 0262-0425 | 0.5-2.5 | 6.0 | 5.95 | 16.0 | 9.0 | 1.0 |
| M5 X 0.8 | 0262-0530 | 0.5-3.0 | 7.0 | 6.95 | 18.0 | 10.0 | 1.0 |
| M6 X 1.0 | 0262-0630 | 1.0-3.0 | 9.0 | 8.95 | 21.0 | 12.0 | 1.5 |
| M8 X 1.25 | 0262-0830 | 1.0-3.0 | 11.0 | 10.95 | 23.5 | 15.0 | 1.5 |



All dimensions in millimetres

ZygoLOGY Rivet Nut Tools

ZygoLOGY offers a comprehensive range of air, battery and hand operated tools available to choose from on the placing tools page of our website. These can be found by [clicking here](#) or by going to:

www.zygology.com/productcart/pc/Tools-for-rivet-nuts.html

If you need assistance deciding which is the right tool for you please call us free on 0808 123 1221 and we will be happy to advise you of the best tool for your requirements

