

## ZygoLOGY ProGrip Rivet Nuts

### 0211 - Low Profile Stainless Steel Range

Issue #1-2017

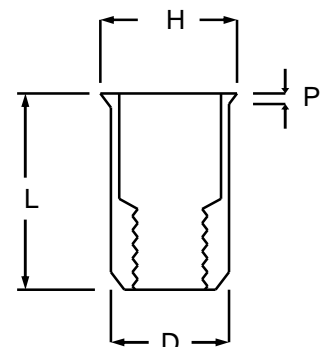
The most cost effective method of installing a full depth thread in thin gauge materials, ProGrip Rivet Nuts come in a variety of forms. Ideal for use in drilled or punched holes, ProGrip Rivet Nuts are installed from one side making them especially suitable for tube, box sections or tight corners. A comprehensive range of inserts is available in a large range of metric thread sizes to suit most applications.

The standard low profile insert gives a near flush finish in sheet materials without the need to countersink the hole. To increase torque to turn values, especially in softer materials, splined inserts may be used. In harder materials, the increased bearing area of plain-bodied inserts can give better results.



#### 0211 Series Low Profile Stainless Steel Range

Thread Size	Part Number	Grip Range	Hole Size -0.0 +0.1	D	L	H	P
M3 X 0.5	0211-0315	0.5-1.5	4.8	4.7	9.0	5.5	0.5
M4 X 0.7	0211-0420	0.5-2.0	6.4	6.3	10.5	7.0	0.5
M5 X 0.8	0211-0530	0.5-3.0	7.2	7.2	12.0	8.0	0.5
M6 X 1.0	0211-0630	0.5-3.0	9.6	9.5	14.5	10.5	0.5
M8 X 1.25	0211-0830	0.5-3.0	10.6	10.5	16.0	11.5	0.5



All dimensions in millimetres

#### ZygoLOGY Rivet Nut Tools

ZygoLOGY offers a comprehensive range of air, battery and hand operated tools available to choose from on the placing tools page of our website. These can be found by [clicking here](#) or by going to:

[www.zygology.com/productcart/pc/Tools-for-rivet-nuts.html](http://www.zygology.com/productcart/pc/Tools-for-rivet-nuts.html)

If you need assistance deciding which is the right tool for you please call us free on 0808 123 1221 and we will be happy to advise you of the best tool for your requirements

