

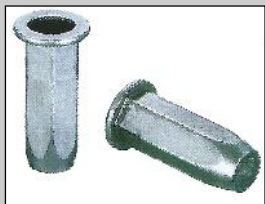
## ProGrip Rivet Nuts

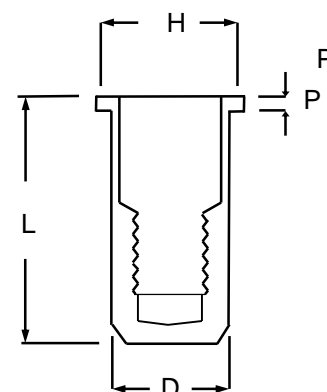
### 0164- Steel large flange Hex Closed End Range

**Issue #1-2018**

The most cost effective method of installing a full depth thread in thin gauge materials, Value Rivet Nuts come in a variety of forms. Ideal for use in drilled or punched holes, ProGrip Rivet Nuts are installed from one side making them especially suitable for tube, box sections or tight corners. A comprehensive range of inserts is available in a large range of metric thread sizes to suit most applications.

The large flange head gives an increased bearing area on the panel increasing push out resistance. To increase torque to turn values, hex profile inserts may be used in conjunction with pre-punched holes. Closed end inserts can be used to ensure that incorrect bolts cannot damage internal components, and improve resistance to ingress from fluids.

		<b>0164 Series Steel Large Flange Hex Closed End Range</b>					
Thread Size	Part Number	Grip Range	Hole Size A/F -0.0 +0.1	D	L	H	P
M4 X 0.7	0164-0425	0.5-2.5	6.0	5.95	15.5	9.0	0.9
M5 X 0.8	0164-0530	0.5-3.0	7.0	6.95	20.00	10.0	1.0
M6 X 1.0	0164-0630	0.5-3.3	9.0	8.95	21.0	13.0	1.5
M8 x 1.25	0164-0830	0.5-3.3	11.0	10.95	24.5	16.0	1.5



All dimensions in millimetres

#### ZygoLOGY Rivet Nut Tools

ZygoLOGY offers a comprehensive range of air, battery and hand operated tools available to choose from on the placing tools page of our website. These can be found by [clicking here](#) or by going to:

[www.zygology.com/productcart/pc/Tools-for-rivet-nuts.html](http://www.zygology.com/productcart/pc/Tools-for-rivet-nuts.html)

If you need assistance deciding which is the right tool for you please call us free on 0808 123 1221 and we will be happy to advise you of the best tool for your requirements

