

ProGrip Rivet Nuts

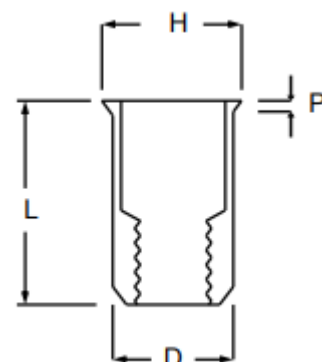
2131- Steel Low Profile Splined Range

Issue #2-2020

The most cost effective method of installing a full depth thread in thin gauge materials, ProGrip Rivet Nuts come in a variety of forms. Ideal for use in drilled or punched holes, ProGrip Rivet Nuts are installed from one side making them especially suitable for tube, box sections or tight corners. A comprehensive range of inserts is available in a large range of metric thread sizes to suit most applications.

The standard low profile head gives a near flush finish in sheet materials without the need to countersink the holes. To increase torque to turn values, splined inserts can be used as well as hex profile inserts in conjunction with matching pre-punched holes. Closed end inserts can be used to ensure that incorrect bolts cannot damage internal components, and improve resistance to ingress from fluids.

		<h2 style="text-align: center;">2131 Series Steel Low Profile Splined</h2>					
Thread Size	Part Number	Grip Range	Hole Size -0.0 +0.1	D -0.1 + 0.07	L	H	P
M3 X 0.5	2131-0315	0.5-1.5	4.8	4.65	9.0	5.4	0.4
M4 X 0.7	2131-0420	0.5-2.0	6.4	6.35	10.5	7.0	0.5
M5 X 0.8	2131-0525	0.5-2.5	7.2	7.15	12	7.85	0.5
M6 X 1.0	2131-0630	1.0-3.0	9.6	9.45	15.0	10.3	0.6
M8 X 1.25	2131-0835	0.5-3.5	10.6	10.45	16.0	11.3	0.6
M10 X 1.5	2131-1040	1.0-4.0	12.7	12.65	20	13.8	0.65


All dimensions in millimetres
**Steel inserts are supplied
Zinc Plated**
**All plating materials are
RoHS / WEEE compliant**

ZygoLOGY Rivet Nut Tools

ZygoLOGY offers a comprehensive range of air, battery and hand operated tools available to choose from on the placing tools page of our website. These can be found by [clicking here](#) or by going to:

www.zygology.com/productcart/pc/Tools-for-rivet-nuts.html

If you need assistance deciding which is the right tool for you please call us free on 0808 123 1221 and we will be happy to advise you of the best tool for your requirements

