

Value Rivet Nuts

Issue #1-2008

0124 Steel Hex Large Flange Range Metric A/F hole

The most cost effective method of installing a full depth thread in thin gauge materials, Value Rivet Nuts come in a variety of forms. Ideal for use in drilled or punched holes, Value Rivet Nuts are installed from one side making them especially suitable for tube, box sections or tight corners. A comprehensive range of inserts is available in a large range of metric thread sizes to suit most applications.

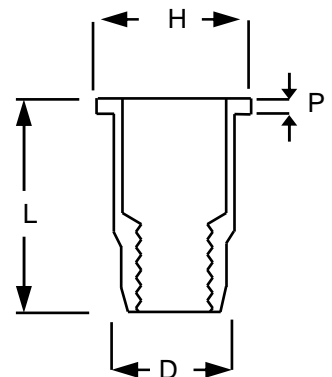
Large flange inserts offer increased push out and torque to turn values. The flange provides an increased load bearing area and reinforces the hole in thinner gauge materials.

Hex inserts provide very high torque to turn values and are especially useful in applications where there is a risk of corrosion or contamination causing the bolt thread to seize during removal.

Hex inserts require a pre-punched hexagonal hole



0124 Series Steel Hex Large Flange Range Half Hex body for Metric A/F Hole



Thread Size	Part Number	Grip Range	Hole Size A/F -0.0 +0.1	D	L	H A/F	P
M4 X 0.7	0124-0425	0.5-2.5	6.1	5.9	10.7	9.0	0.9
M5 X 0.8	0124-0530	0.5-3.0	7.1	6.9	13.7	10.0	0.9
M6 X 1.0	0124-0633	0.5-3.3	9.1	8.9	16.0	13.0	1.5
M8 X 1.25	0124-0833	0.5-3.3	11.1	10.9	18.0	16.0	1.5
M10 X 1.5	0124-1035	0.5-3.5	12.9	13.1	21.0	19.0	2.0

Steel inserts are supplied zinc plated and passivated. All plating materials are RoHS/WEEE compliant.

Please note: we may have residual stocks of zinc and yellow passivated inserts as we move to RoHS compliant plating. If you require compliant plating please indicate this on your orders.

All dimensions in millimetres

7420 Rivet Nut Placing Tool

A fast ergonomically designed tool, designed to place threaded inserts quickly and uniformly. Using a hydro pneumatic spin-pull system the 742 has an automatic action to spin the insert onto the mandrel. Once the insert is engaged, a single pull of the trigger places the insert and reverses the tool off. The total cycle time is no more than a couple of seconds.

Nose equipment is quick and simple to change and mandrels (the only consumable item) are cheap and easy to come by in an emergency. Capable of placing inserts from M3 to M12, the 742 is easily adjusted for different applications without recourse to special tools.

