

Zygology

Data Sheet

FASTENING & ASSEMBLY SOLUTIONS

Zygology Limited, 2 Barnes Wallis Court
Wellington Road, High Wycombe, Bucks HP12
3PS
Tel 08458 12 12 20 Fax 08458 12 12 21
Email sales@zygology.com www.zygology.com

Z200/300

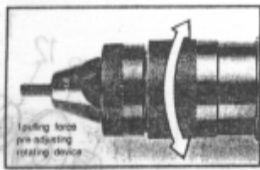
Issue # 2-2008

Air Powered Rivet Nut Installation Tool

Setting the tool

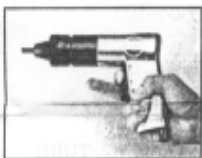
The Z200/300 family of tools use a spin-on spin-off system to place rivet nuts. Inserts from M3 to M8 can be placed, depending on the tool selected. Please note these tools are not suited to stainless steel or closed end inserts. Air pressure should ideally be in the range 70-90 PSI.

Tools come supplied with one set of nose equipment. Additional sets are available to order.



- The torque setting needs to be adjusted according to the size and material type of the insert. This is easily done by rotating the calibrated ring at the front of the tool.
- Turning the ring clockwise increases the torque setting, allowing the tool to place larger thread sizes.
- Turning the ring counter clockwise reduces the torque setting allowing smaller thread sizes to be placed.
- The calibration marks can be used as a rough guide to the required setting, but adjustments should be confirmed by testing and adjusting the torque setting by placing inserts into a test piece.

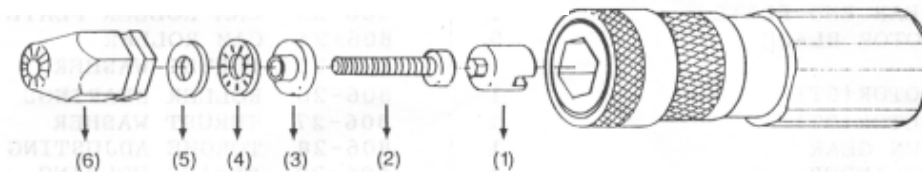
Using the tool



1. To place an insert you can either drop the insert into the hole and then introduce the tool, or you can spin the insert directly onto the mandrel with your fingers.
2. The trigger is a rocker switch. Pulling the top portion of the trigger will cause the mandrel to rotate clockwise so that the insert pulls up into a flange behind the sheet, and thus locking the insert into the material.
3. When you hear the tool ratchet pull the lower half of the trigger. The tool will now reverse off the insert.
4. If the insert does not appear to be set correctly, adjust the tool as described in the section above.



Changing nose equipment (parts list on reverse)



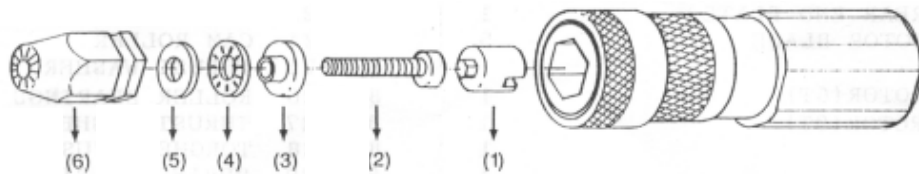
1. To remove the nose equipment pull back on the knurled ring at the front of the tool. At the same time pull the nose housing (6) forward. The nose assembly should now detach from the tool.
2. To install a new nose assembly ensure that the drive shaft (1) is correctly engaged onto the end of the tool drive mechanism. Items 2 to 5 should be inserted into the nose housing (6) in the sequence shown and then pushed onto the end of the tool. The nose assembly should locate with a slight click.

Note: Ensure that the bearing assembly is well lubricated with a high melting point grease at all times, and that the mandrel is replaced at frequent intervals. All spare parts, nose assemblies high melting point grease etc can be supplied by Zygology Ltd. To ensure the smooth running of the motor a small quantity of air line oil should be applied to the air inlet after each use.

**** Lubricating with oil will prolong mandrel life when tool is in use with non-lubricated Nutserts ****

Z200 & Z300 Pistol Grip Nutsert Air Tool

Part Numbers for Nose Kit Spares



Size	(1) Drive Shaft	(2) Drive Screw	(3) Sleeve	(4) Bearing	(5) Washer	(6) Nose Tip	Full Kit
M3	Z200-0310	7001-0325	Z200-0320	Z200-0330	Z200-0340	Z200-0350	Z200-0300
M4	Z200-0410	7001-0326	Z200-0420	Z200-0430	Z200-0440	Z200-0450	Z200-0400
M5	Z200-0510	7001-0256	Z200-0520	Z200-0530	Z200-0540	Z200-0550	Z200-0500
M6	Z300-0610	7001-0337	Z300-0620	Z300-0630	Z300-0640	Z300-0650	Z300-0600
M8	Z300-0810	7001-0084	Z300-0840	Z300-0830	Z300-0840	Z300-0850	Z300-0800

Z200 recommended placing M3 – M5

Z300 recommended placing M6 – M8

Bearing assembly grease part number: 7992-0020

For spares or enquiries contact:

Zygology Ltd
 2 Barnes Wallis Court
 Wellington Road
 High Wycombe
 HP12 3PS
 Tel: 08458 12 12 20
 Fax: 08458 12 12 21
 Email: sales@zygology.com
 Website: www.zygology.com

Zygology brand hand and power tools are covered by a limited warranty that its products will be free of defects in workmanship and materials when used under normal working conditions. The limited warranty is contingent upon: (1) the product being installed, maintained and used in accordance with product literature and instructions, and (2) confirmation by Zygology of such a defect. Zygology makes the foregoing limited warranty for a period of three months for hand tools and six months for power tools. The foregoing limited warranty is limited to the repair or replacement of the tool at Zygology's option. The foregoing express limited warranty and remedy are exclusive and are in lieu of all other warranties and remedies. Any implied warranty as to quality, fitness for purpose, or merchantability are hereby specifically disclaimed and excluded by Zygology Ltd.